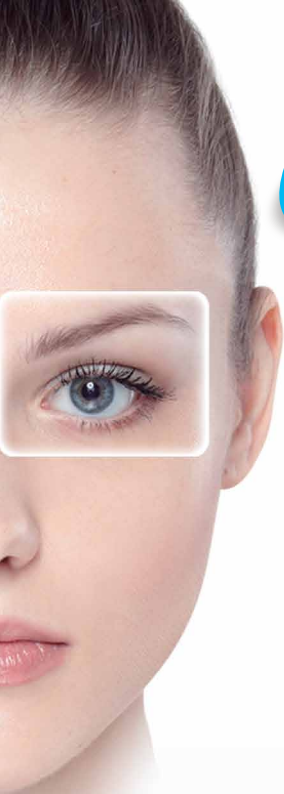


Oftalmológicos 



# Vision



# Guía de Códigos MIPRES

Marca	DCI	Principio Activo	DCI Concentración	Descripción
BRIMOFTAL P	06863	BRIMONIDINA	891	[brimonidina tartrato] 1,5mg/1mL
BRIMOLOL	06863	BRIMONIDINA	3856	[brimonidina tartrato] 2mg/1mL ; [timolol] 5mg/1mL
CARMELUB gel	04950	CARMELOSA	1085	[carboximetilcelulosa sodica] 10mg/1mL
CARMELUB tears	04950	CARMELOSA	1095	[carmelosa sodica] 5mg/1mL
DORZOLAM	06960	DORZOLAMIDA	1639	[dorzolamida] 20mg/1mL
DORZOLOL	06960	DORZOLAMIDA	1640	[dorzolamida] 20mg/1mL; [timolol] 5mg/1mL
GLAUOFTAL T	06980	LATANOPROST	4100	[latanoprost] 0,05mg/1mL ; [timolol] 5mg/1mL
HIPROLUB	50020	HIDROXIPIOILME	2137	[hidroxipropilmetilcelulosa] 3mg/1mL
KETOFTAL	03993	KETOTIFENO	2353	[ketotifeno] 0,25mg/1mL
NEPAOFTAL	07685	NEPAFENACO	2709	[nepafenaco] 1mg/1mL
OFTAMOX	07659	MOXIFLOXACINO	2678	[moxifloxacino] 5mg/1mL
OFTAMOX D	07659	MOXIFLOXACINO	1476	[dexametasona fosfato] 1mg/1mL; [moxifloxacino] 5mg/1mL
OLOFTAL	07257	OLOPATADINA	2787	[olopatadina clorhidrato] 2mg/1mL
OXYOFTAL	00103	OXITETRACICLINA	2837	[oxitetraciclina] 0,5g/100g ; [polimixina b] 1million UI. /100g
TOBRAOFTAL	02990	TOBRAMICINA	3368	[tobramicina] 3mg/1mL
TOBRAOFTAL D	02990	TOBRAMICINA	1492	[dexametasona] 1mg/1mL ; [tobramicina] 3mg/1mL

